

MONTHLY MEMBERSHIP PROGRESS REPORT

LOCATION ARKANSAS

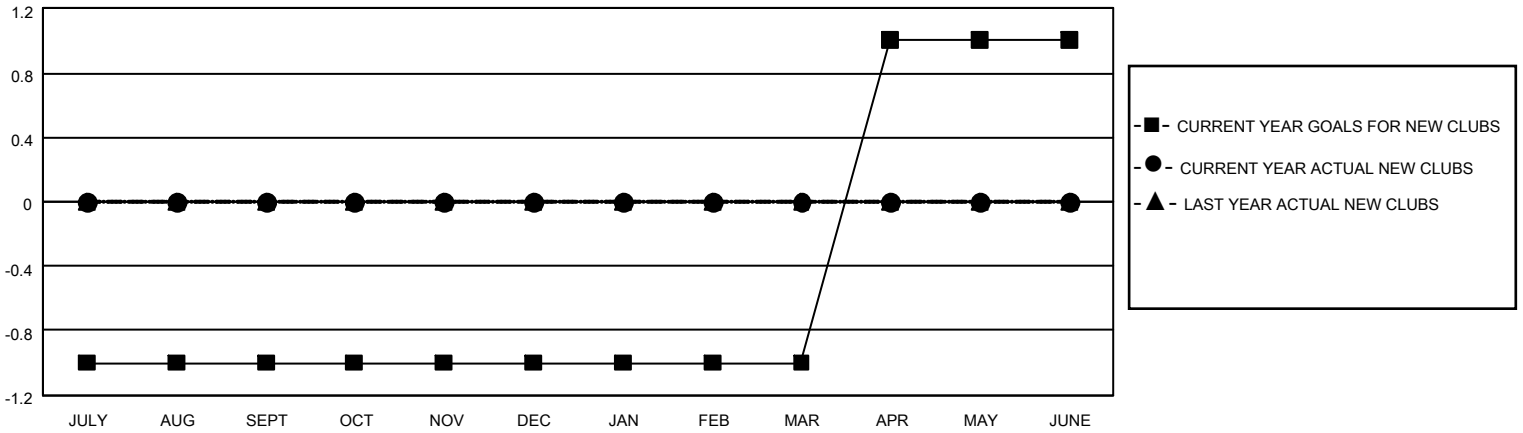
District 7 N

Results as of: 5/31/2021

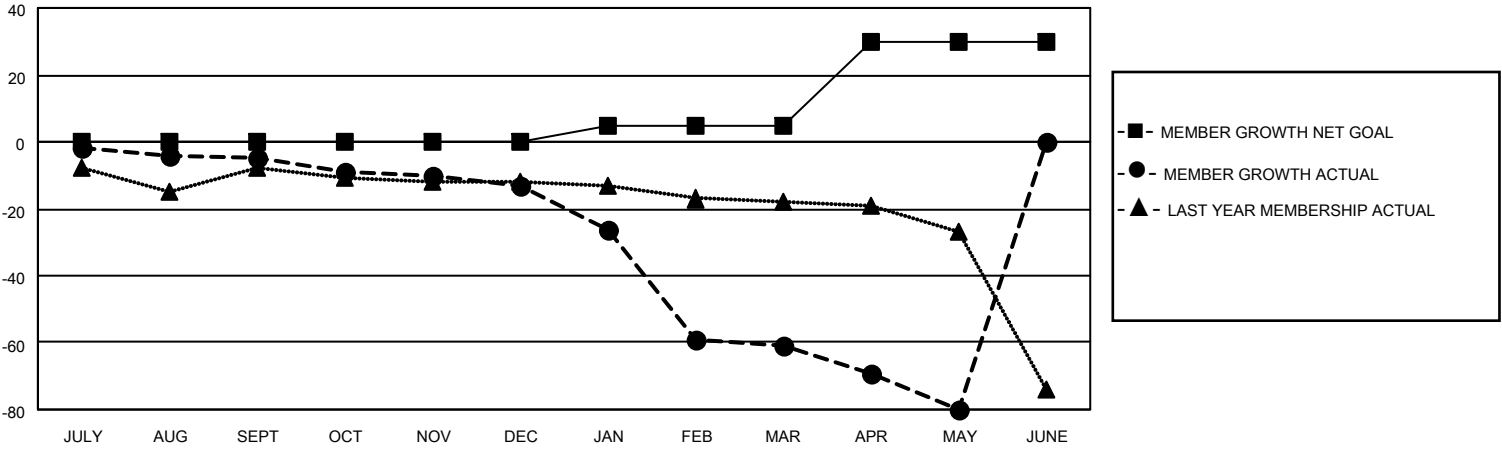
Clubs			
RESULTS FOR 2020-2021			
QUARTER	NEW CLUB GOAL	NEW CLUBS	DROPPED CLUBS
JULY/AUG/SEPT	(1)	0	0
OCT/NOV/DEC	0	0	0
JAN/FEB/MAR	0	0	2
APR/MAY/JUNE	2	0	0

Members			
RESULTS FOR 2020-2021			
QUARTER	MEMBER GROWTH NET GOAL	MEMBER GROWTH ACTUAL	DROPPED MEMBERS ACTUAL (including transfers)
JULY/AUG/SEPT	0	15	15
OCT/NOV/DEC	0	4	11
JAN/FEB/MAR	5	13	54
APR/MAY/JUNE	25	33	29

GOALS AND ACTUAL NEW CLUBS CUMULATIVE



GOALS AND ACTUAL MEMBERS CUMULATIVE



DROPPED CLUBS: 2	13 CLUBS OF 28 ADDED 1 OR MORE NEW MEMBERS	<p style="text-align: center;"><u>GENDER DISTRIBUTION</u></p> <p>MALE 325 (60.07%)</p> <p>FEMALE 216 (39.93%)</p>
<p style="text-align: center;"><u>DROPPED MEMBERS</u></p> <p>DECEASED 8</p> <p>CLUB CANCELLED 31</p> <p>OTHER 70</p> <hr/> <p>TOTAL 109</p>	<p>CLICK HERE FOR CUMULATIVE MEMBERSHIP DATA</p>	<p>TOTAL FAMILY UNIT MEMBERS 133</p> <p>FAMILY MEMBERS PAYING HALF DUES 67</p>